



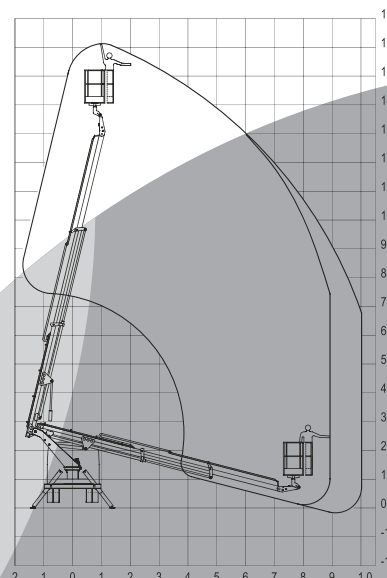
www.challenger-equipment.co.za

Galileo CT 16 Truck Mount (16m)

Designed and
manufactured
in South Africa



WORKING FLIGHT ENVELOPE



- ▶ **Working Height:** 16m
- ▶ **Max horizontal reach:** 8m
- ▶ **Basket:** 2man
- ▶ **Tare mass** 1080kg
- ▶ **Power System:** PTO
- ▶ **Basket size:** 750 x 1200
- ▶ **Safe working load:** 250kg
- ▶ **Controls:** Hydraulic top & bottom
- ▶ **4x hydraulic stabilizers with leg lock valve**
- ▶ **360 degree non-continuous rotation**
- ▶ **Hydraulic operated control valve from both the ground and the cage**
- ▶ **Manual override in the event of system failure**
- ▶ **Polyethylene 2 man work basket 1000kv**
- ▶ **Emergency pump**

CT16 Truck Aerial Platform

Key Features

- Integrated base and outrigger system
- Simple, ergonomic design for vehicles
- Individual stabilizer control valve
- Telescopic configuration
- No plastic mouldings
- Manufactured according to SANS Standards
- Multiple options on baskets
- Additional accessories available on request
- Truck body with sub frame and lights (Optional)

Robust design with interlocking outriggers, Dead Man controls, overload interlocking and in complete compliance with the South African National Standards 16368.

